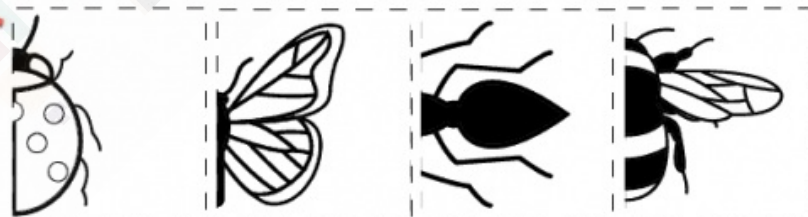
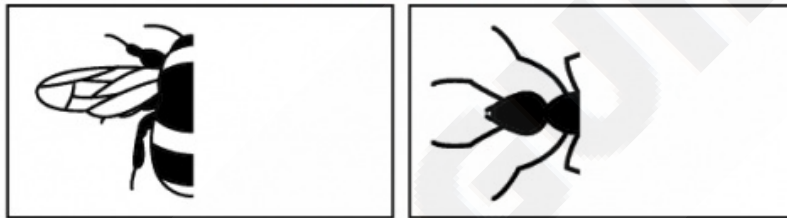


Visual perception worksheet.

Visual perception refers to the ability to make sense of what is seen with our eyes. Visual perception skills are essential tools in reading, writing, and math success as well as everyday tasks such as completing puzzles, cutting, drawing etc

Direction: Cut and paste to connect each picture with its other half .

Insects



Visual perception worksheet.

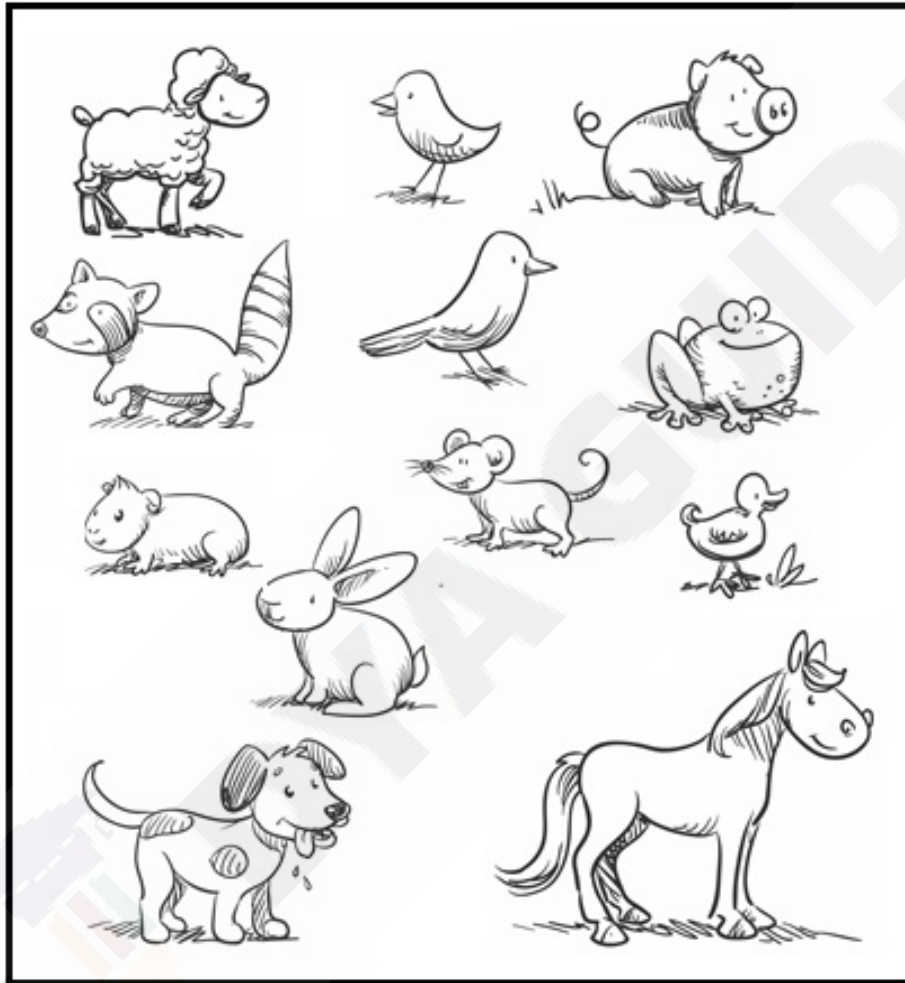
Direction: Draw a line to connect each picture with its shadow .



Left or Right Worksheet !

Directions: Draw a circle around all the animals facing right.

Draw a "X" on all the animals facing left.



Left or Right Worksheet !

Draw a line to the house on the right



Draw a line to the house on the left



Draw a line to the house on the right



Draw a line to the house on the right



Draw a line to the house on the left

